

BOWMAN DESIGN FORUM

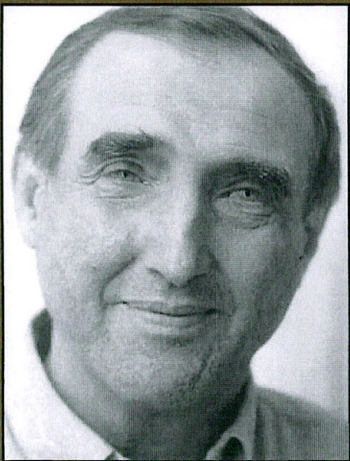
Design Discussions in the Flint Hills

November 29, 2000

1:30 p.m.

Pierce Atrium

Seaton Hall East

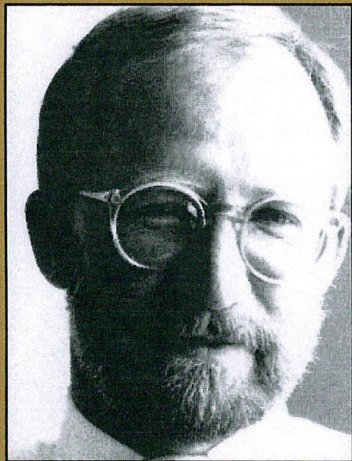


PETER Q. BOHLIN, FAIA
Bohlin, Cywinski, Jackson

Peter Bohlin is a founding principal of Bohlin Cywinski Jackson, with offices in Wilkes-Barre, Pittsburgh, Philadelphia and Seattle. The firm's work is known for its extraordinary aesthetic, its commitment to particularity of place and user and a quiet rigor which is both intellectual and intuitive.

Mr. Bohlin received his Bachelor of Architecture degree from Rensselaer Polytechnic Institute and his Master's from Cranbrook Academy of Art. A Fellow of the American Institute of Architects, he served as chair of the AIA's Committee on Design from 1984 to 1985.

More than 170 regional, national and international design awards have been received by Bohlin Cywinski Jackson since its inception in 1965, including the American Institute of Architects' 1994 Architecture Firm Award. Their work appears regularly in domestic and overseas publications. A monograph on the firm, *The Architecture of Bohlin Cywinski Jackson*, was published in 1994 and a second book, *Ledge House*, detailing the design and construction of a house in the Catoctin Mountains of Maryland was recently released.

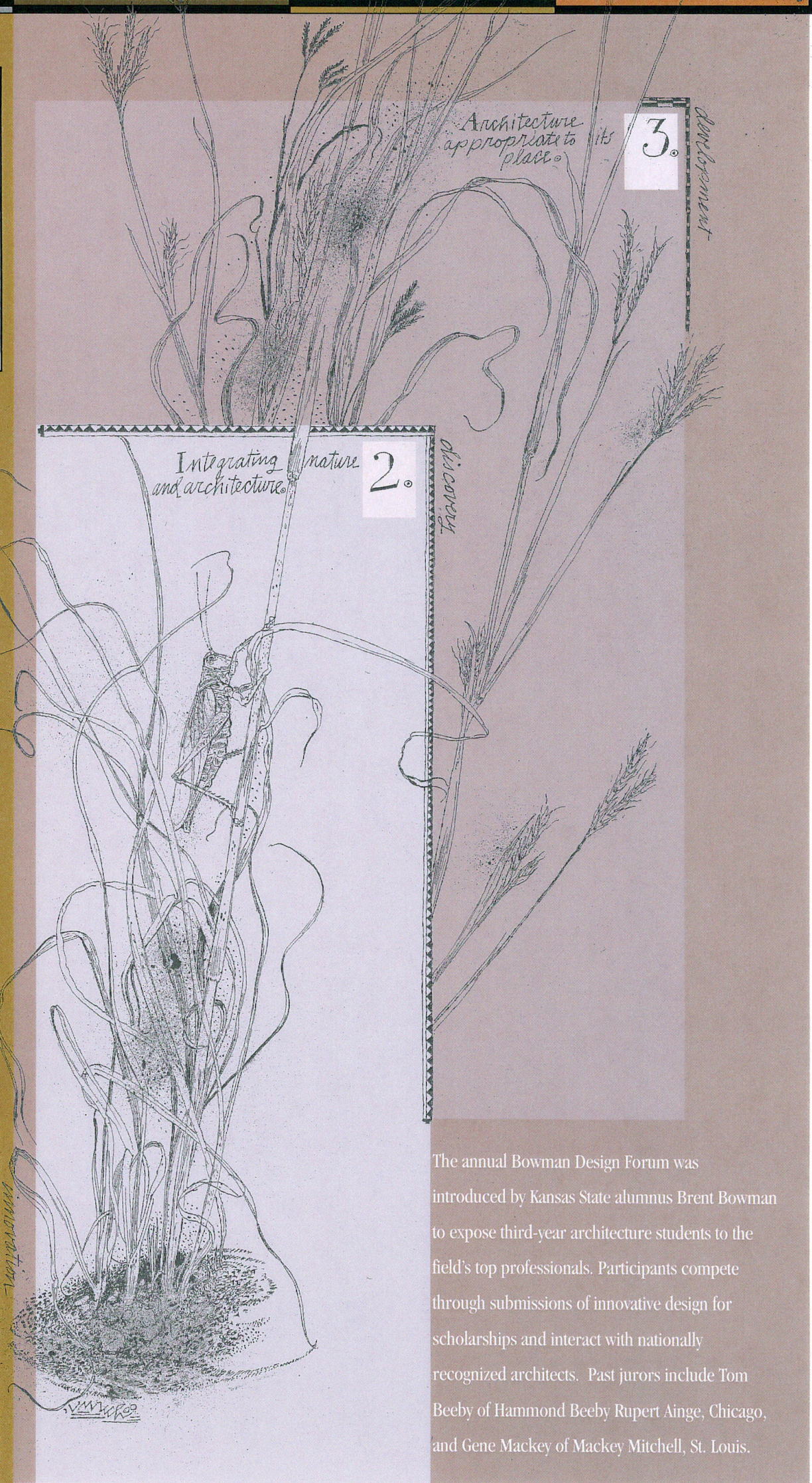


CAL LEWIS, FAIA
Herbert Lewis Kruse Blunck

A founding principal of Herbert Lewis Kruse Blunck Architecture in Des Moines, Iowa, Cal Lewis has made great contributions to the firm's award-winning work through his focus on design. Most recently, his firm has been selected as one of three finalists for the National AIA Firm Award.

Mr. Lewis has been the recipient of over 68 awards for design excellence, 14 of them at the national level. They include accolades from such well-known publications as *Time*, *AIA Journal*, and *Architecture*, as well as the national AIA and ASIC/AIA organizations. He has also been recognized as one of the nation's top young architects and awarded the AIA's Fellowship in Design during his career.

An Iowa State University graduate, Mr. Lewis also continues his commitment to architectural education through serving as the chair of the department at his alma mater. Striving to increase design awareness, Mr. Lewis also travels extensively to present lectures and serves as a juror for many architectural competitions.



The annual Bowman Design Forum was introduced by Kansas State alumnus Brent Bowman to expose third-year architecture students to the field's top professionals. Participants compete through submissions of innovative design for scholarships and interact with nationally recognized architects. Past jurors include Tom Beeby of Hammond Beeby Rupert Ainge, Chicago, and Gene Mackey of Mackey Mitchell, St. Louis.



COLLEGE OF
ARCHITECTURE
PLANNING & DESIGN
KANSAS STATE UNIVERSITY